

This Quick Start Guide is intended to highlight a typical installation; these instructions are not intended to be comprehensive. Because each application is unique, it is the responsibility of the purchaser, designer, installer and end user to ensure that the total door system is safe for intended use. Please consult the manual for further information at: www.liftmaster.com/catalogresources/v3/en-us/shared/files/tucmanuals/114a4961.pdf.

To watch a video, go to <https://www.youtube.com/watch?v=MnUV0P4b9UE>

This garage door opener is compatible with:

- Doors that use a torsion bar and springs. The torsion bar must be 1" (2.5 cm) diameter. NOT compatible with reverse wound drums.
- 4-6" (10-15 cm) drums. NOT compatible with tapered drums over 6" (15 cm).
- High lift doors up to 54" (137.2 cm) high and standard lift sectional doors up to 14 ft. (4.3 m) high.
- Doors up to 18 ft. (5.5 m) wide.
- Doors up to 180 sq. ft. (16.7 sq. m).

Carton Inventory

Garage Door Opener, Smart Control Panel®, 3-Button Remote Control, Battery, Collar, Mounting Bracket, Automatic Garage Door Lock, Cable Tension Monitor, MyQ® LED Remote Light, The Protector System® (1 Sending Sensor and 1 Receiving Sensor), Safety Reversing Sensor Bracket (2), 2 Conductor Bell Wire, Safety Labels and Literature

Hardware

Screw #10-32 (2), Screw 14-10x2" (4), Handle, Rope, Screw 1/4"-20x1/2" (2), Drywall Anchor (Screw-In) (2), Screw 8-32x1" (2), Screw 6ABx1-1/4" (2), Drywall Anchor (2), Screw 6-32x1" (2), Carriage Bolt 1/4"-20x1/2" (2), Wing Nut 1/4"-20 (2)

Hardware for MyQ LED Remote Light

Drywall Anchor (Screw-In) (2), Screw #6x1" (2)

IMPORTANT INSTALLATION INSTRUCTIONS

⚠️ WARNING

To reduce the risk of SEVERE INJURY or DEATH:

- THIS QUICK START IS NOT INTENDED TO REPLACE THE MANUAL, BUT SERVES AS A REMINDER FOR THOSE FAMILIAR WITH THE MANUAL AND THE INSTALLATION OF THIS PRODUCT. READ AND FOLLOW ALL INSTALLATION WARNINGS AND INSTRUCTIONS IN THE INSTALLATION MANUAL.
- Install garage door opener ONLY on properly balanced and lubricated garage door. An improperly balanced door may NOT reverse when required and could result in SEVERE INJURY or DEATH.
- ALL repairs to cables, spring assemblies and other hardware MUST be made by a trained door systems technician BEFORE installing opener.
- Disable ALL locks and remove ALL ropes connected to garage door BEFORE installing opener to avoid entanglement.
- Where possible, install the door opener 7 feet (2.13 m) or more above the floor.
- Mount the emergency release within reach, but at least 6 feet (1.83 m) above the floor and avoiding contact with vehicles to avoid accidental release.
- NEVER connect garage door opener to power source until instructed to do so.
- NEVER wear watches, rings or loose clothing while installing or servicing opener. They could be caught in garage door or opener mechanisms.
- Install wall-mounted garage door control:
 - within sight of the garage door.
 - out of reach of small children at a minimum height of 5 feet (1.53 m) above floors, landings, steps or any other adjacent walking surface.
 - away from ALL moving parts of the door.
- Install the emergency release marking. Attach the marking on or next to the emergency release. Install the entrapment warning placard next to the door control in a prominent location.
- Place emergency release/safety reverse test label in plain view on inside of garage door.
- Upon completion of installation, test safety reversal system. Door MUST reverse on contact with a 1-1/2" (3.8 cm) high object (or a 2x4 laid flat) on the floor.

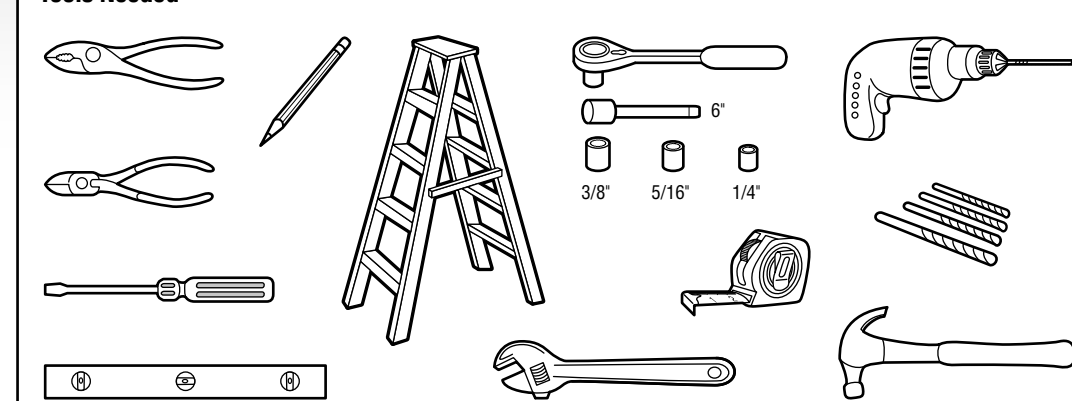
⚠️ WARNING: This product can expose you to chemicals including lead, which are known to the State of California to cause cancer or birth defects or other reproductive harm. For more information go to www.P65Warnings.ca.gov

STEP 1 PLANNING

Inspect the proposed installation area to make sure it meets the requirements below. The garage door opener can be installed on either side of the door. The illustrations shown are for installation on the left side.

- Inspect the proposed installation area to make sure it meets the requirements below. The garage door opener can be installed on either side of the door. The illustrations shown are for installation on the left side.
 - 3" (7.6 cm) minimum clearance from wall to torsion bar.
 - 8.5" (21.6 cm) minimum clearance from wall to torsion bar.
 - Torsion bar must extend at least 1.5" (3.81 cm) past the wall or obstruction.
- Inspect the torsion bar while raising and lowering the door; there should be no noticeable shifting or vibrating of the door. If the movement is not corrected, the life of the garage door opener will be greatly reduced.
- Check the seal on the bottom of the door. Any gap between the floor and the bottom of the door must not exceed 1/4" (6 mm).
- Lift the door halfway up. Release the door. If balanced, it should stay in place, supported entirely by its springs. Doors heavier than 650 lbs. should NOT open or fall rapidly.

Tools Needed



Additional Items You May Need
Extension brackets (Model 941AS281-1) or wood blocks: Extension brackets or wood blocks may be needed to install the safety reversing sensors.
Fastening hardware: Floor mounting of the safety reversing sensors requires hardware not provided.
90° connector for cable conduit or flex cable adapter: Required for permanent wiring.

LiftMaster
300 Windsor Drive
Oak Brook, IL 60523

STEP 2 INSTALLATION

- Assemble the Garage Door Opener**
 - Attach the collar to the motor shaft with the set screws facing out. Tighten the set screws to the motor shaft. Tighten 1/4 - 1/2 turn after making contact with the motor shaft.
 - Loosely attach the mounting bracket to the garage door opener on the same side as the collar.
- Mount the Garage Door Opener**
 - Close the garage door completely. Slide the garage door opener onto the torsion bar. Ensure the collar does NOT touch the bearing. Use a level to align the garage door opener.
 - Make sure the mounting bracket is located on a solid surface. If installing on drywall, the mounting bracket MUST be attached to a stud. Mark and drill 3/16" pilot holes.
 - Tighten the collar set screws on the torsion bar. For a hollow torsion bar, tighten the screws 3/4 - 1 full turn after making contact with the bar. For a solid shaft torsion bar, tighten the screws 1/4 - no more than 1/2 turn after making contact with the shaft. If installing on a keyed torsion bar, DO NOT tighten the screws into the keyway.
 - Secure the mounting bracket to the wall. Tighten the mounting bracket to the garage door opener.
- Install on the same side as the garage door opener if possible.
- Install the Cable Tension Monitor (Required)**

Make sure there are no obstructions that prevent the cable tension monitor from closing completely when slack is detected. For right side installation, remove the snapping holding the roller in place and reassemble on the opposite side of the cable tension monitor. Wire to the garage door opener, see **WIRING AND POWER (A)**.

STEP 2 INSTALLATION (CONTINUED)

- Install the MyQ® LED Remote Light**

MyQ Remote LED Light must be installed to enable use of Timer-to-Close or MyQ Smartphone Control of the door. The light MUST be visible if you're standing in the doorway of the garage. Install the light within 6 ft. (1.83 m) of an electrical outlet so that the cord and light are away from moving parts. The light has been factory programmed to operate with your opener.
- Install the door control within sight of garage door, out of reach of small children at a minimum height of 5 ft. (1.5 m) above floors, landings, steps or any other adjacent walking surface, and away from ALL moving parts of door.
- Wire to the garage door opener, see **WIRING AND POWER (C)**.
- Fasten the warning placard next to the door control.
- Install the Protector System®
 - Install and align the brackets so the safety reversing sensors will face each other across the garage door, with the beam no higher than 6" (15 cm) above the floor.
 - Wire to the garage door opener, see **WIRING AND POWER (D)**.
 - Strip 7/16" (11 mm) of insulation from each set of wires. Separate the wires. Twist the white wires together. Twist the white/black wires together.

STEP 3 WIRING AND POWER

- Wire the Accessories to the Garage Door Opener**
 - Automatic Garage Door Lock**
Connect to either plugin.
 - Cable Tension Monitor**
Connect to green terminals (polarity not important).
 - Smart Control Panel**
Connect to red and white terminals (polarity not important).
 - Safety Reversing Sensors**
Connect white/black wires to gray terminal and white wires to white terminal.
- Connect Power**
 - To reduce the risk of electric shock, your garage door opener has a grounding type plug with a third grounding pin. This plug will only fit into a grounding type outlet. If the plug doesn't fit into your outlet, contact a qualified electrician to install the proper outlet.
 - Plug in the garage door opener into a grounded outlet.
 - Check to make sure the LEDs in both sensors are glowing steadily. The LEDs in both sensors will glow steadily if they are aligned and wired correctly. If permanent wiring is required by your local code, refer to the manual.
- Install the Battery Backup**
 - Unplug the garage door opener.
 - Connect red (+) and black (-) wires from the garage door opener to the corresponding battery terminals.

Do not run the garage door opener at this time.

STEP 4 ADJUSTMENTS

- Program the Travel**
 - Press and hold the Adjustment Button until the UP button begins to flash and/or a beep is heard.
 - Press and hold the UP Button until the door is in the desired UP position.
 - Once the door is in the desired UP position, press and release the Adjustment Button. The garage door opener lights will flash twice and the DOWN Button will begin to flash.
 - Press and hold the DOWN Button, until the door is in the desired DOWN position.
 - Once the door is in the desired DOWN position, press and release the Adjustment Button. The garage door opener lights will flash twice and the UP Button will begin to flash.
 - Press and release the UP Button. When the door travels to the programmed UP position, the DOWN Button will begin to flash.
 - Press and release the DOWN Button. The door will travel to the programmed DOWN position. Programming is complete.
- Test the Safety Reversal System**
 - With the door fully open, place a 1-1/2" (3.8 cm) board (or a 2x4 laid flat) on the floor, centered under the garage door.
 - Press the remote control push button to close the door. The door MUST reverse when it makes contact with the board.
 - If the door stops but does not reverse:
 - Review the installation instructions provided to insure all steps were followed.
 - Repeat Program the Travel (see Adjustment Step 1);
 - Repeat the Safety Reversal test. If the test continues to fail, call a trained door systems technician.
- Test the Protector System®**
 - Press the remote control push button to open the door.
 - Place the opener carton in the path of the door.
 - Press the remote control push button to close the door. The door will not move more than 1" (2.5 cm), and the opener lights will flash.
 - The garage door opener will not close from a remote if the indicator light in either sensor is off (alerting you to the fact that the sensor is misaligned or obstructed).
- Test Cable Tension Monitor**

With the door fully closed, push on the front of the cable tension monitor. A click should be heard. If there is no click, the roller may be hitting the jamb and not allowing the switch to deflect flush in the cable. Make sure the cable tension monitor is mounted flush with the wall and the roller is free from any obstructions. If your cable tension monitor has been activated the UP and DOWN arrows will flash diagnostic code 3-5.
- Test the Automatic Garage Door Lock**
 - With the garage door fully closed, the automatic garage door lock bolt should be protruding through the track.
 - Open the garage door. The automatic garage door lock should retract before the garage door begins to move.
 - Close the garage door. When the garage door reaches the fully closed position, the automatic garage door lock should automatically activate to secure the door.
 - Disengage the automatic garage door lock by sliding the manual release to the open position.
- To Open the Door Manually**

Disengage any door locks before proceeding. The door should be fully closed if possible. Pull down on the emergency release handle until a click is heard from the garage door opener and lift the door manually.

To reconnect the door to the garage door opener, pull the emergency release handle straight down a second time until a click is heard from the garage door opener. The door will reconnect on the next UP or DOWN operation.

TROUBLESHOOTING

Your garage door opener is programmed with self-diagnostic capabilities. The UP and DOWN arrows on the garage door opener flash the diagnostic codes.

Diagnostic Code	Symptom	Solution
1 1	The garage door opener will not close and the light flashes.	Safety sensors are not installed, connected or wires may be cut. Inspect sensor wires for a disconnected or cut wire.
1 2	The garage door opener will not close and the light flashes.	There is a short or reversed wire for the safety sensors. Inspect safety sensor wire at all staple points and connection points and replace wire or correct as needed.
1 3	The garage door opener will not function.	The wires for the door control are shorted or the door control is faulty. Inspect door control wires at all staple points and connection points and replace wire or correct as needed.
1 4	The garage door opener will not close and the light flashes.	Safety sensors are misaligned or were momentarily obstructed. Realign both sensors to ensure both LEDs are steady and not flickering. Make sure nothing is hanging or mounted on the door that would interrupt the sensors path while closing.
1 5	Door moves 6-8" (15-20 cm) stops and reverses.	Manually open and close the door. Check for binding or obstructions, such as a broken spring or door lock, correct as needed. Check wiring connections at travel module and at the logic board. Replace travel module if necessary.
1 6	Door coast after it has come to a complete stop.	Manually open and close the door. Check for binding or obstructions, such as a broken spring or door lock, correct as needed. Replace logic board if necessary.
2 F-5	No movement of sound.	Replace logic board.
3 1	The garage door opener moves slightly, then stops.	Activate the garage door opener again. If problem persists, replace logic board.
3 3	The battery status LED is constantly flashing green.	Battery backup charging circuit error, replace logic board.
3 5	The garage door opener will not close or door reverses during travel.	Check for possible door obstructions and remove. Check that the cable tension monitor is properly connected to the opener. Replace the cable tension monitor. If two cable tension monitors were previously installed and one has been removed, unplug and plug in the opener three times to return the monitor to the opener.
4 1-4	Door is moving stops and/or reverses.	Manually open and close the door. Check for binding or obstructions, such as a broken spring or door lock, correct as needed. If the door is binding or sticking attempt to reprogram travel.
4 5	Opener runs approximately 6-8" (15-20 cm), stops and reverses.	Communication error to travel module. Check travel module connections, replace module if necessary.
4 6	The garage door opener will not close and the light flashes.	Safety sensors are misaligned or were momentarily obstructed. Realign both sensors to ensure both LEDs are steady and not flickering. Make sure nothing is hanging or mounted on the door that would interrupt the sensor's path while closing.
5 5	The door will not close when using Timer-to-Close or MyQ Smartphone Control.	MyQ Remote LED Light must be installed to use TTC or MyQ to control the door. Plug in the MyQ Remote LED Light and make sure it is programmed to the garage door opener.

LiftMaster Ouvre-porte de garage Wi-Fi® à montage mural Modèle 8500W

Ce guide rapide est prévu pour montrer une installation typique; ces instructions ne sont pas prévues pour être exhaustives. Puisque chaque application diffère, il incombe à l'acheteur, au concepteur, à l'installateur et à l'utilisateur final de s'assurer que le système de porte complet est sûr pour l'usage prévu. Consulter le manuel pour plus d'information à : www.liftmaster.com/catalogresources/v3/en-us/shared/files/tucmanuals/114a4961.pdf. Pour regarder une vidéo, aller à <https://www.youtube.com/watch?v=MnUV04b9UE>

IMPORTANTES INSTRUCTIONS CONCERNANT L'INSTALLATION

⚠️ WARNING

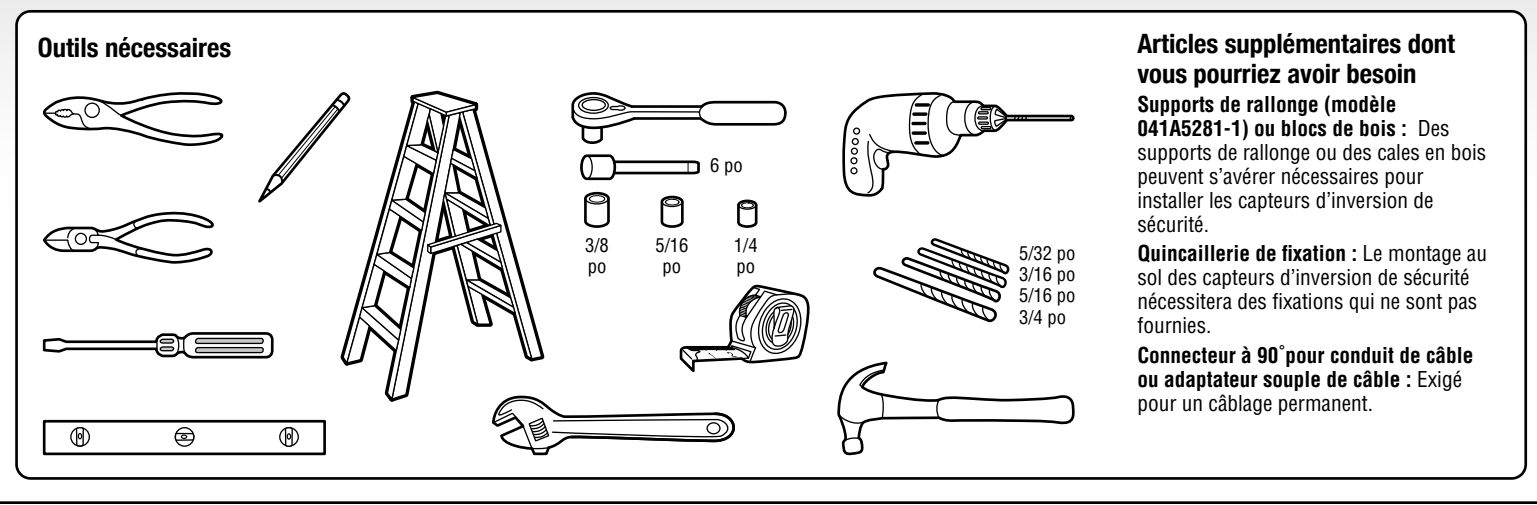
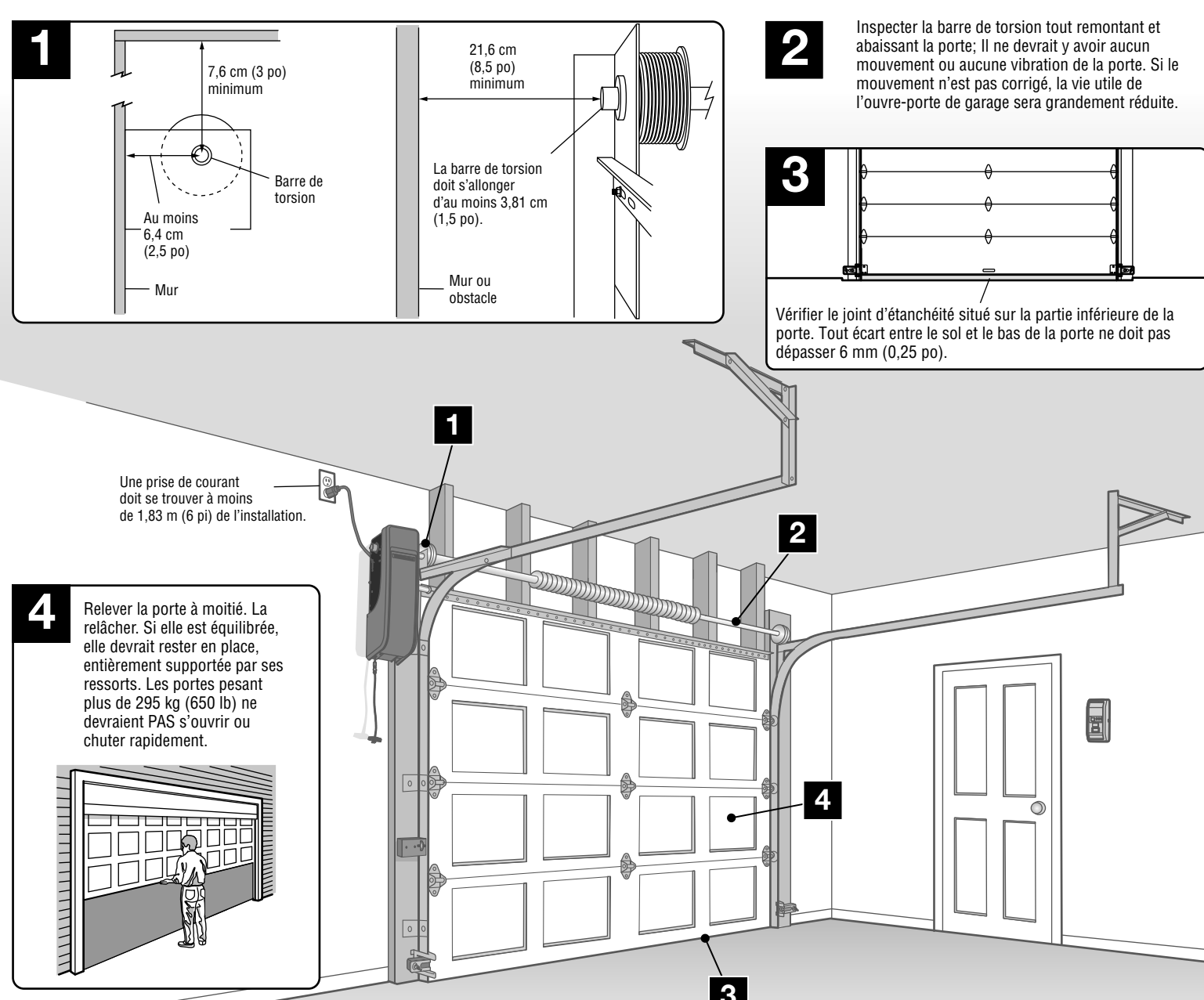
Pour réduire le risque de BLESSURES GRAVES, voire MORTELLES :

1. CE GUIDE RAPIDE NE REMPLACE PAS LE MANUEL. MAIS IL SERT PLUTÔT D'AIDE-MÉMOIRE AUX PERSONNES QUI SE SONT FAMILIARISÉES AVEC LE MANUEL ET L'INSTALLATION DE CE PRODUIT. LIRE ET OBSERVER TOUS LES AVERTISSEMENTS ET INSTRUCTIONS DANS LE MANUEL D'INSTALLATION.
2. Installer l'ouvre-porte de garage UNIQUEMENT sur une porte de garage bien équilibrée et lubrifiée. Une porte mal équilibrée peut ne PAS inverser sa course en cas de besoin et pourrait entraîner des BLESSURES GRAVES, voire MORTELLES.
3. TOUTES les réparations aux câbles, ensembles de ressort et autres ferrures de montage DOIVENT être confiées à un technicien formé en systèmes de porte AVANT d'installer l'ouvre-porte.
4. Désactiver TOUTES les serrures et le rétroviseur à partir de la porte de garage AVANT d'installer l'ouvre-porte afin d'éviter un emmêlement. Dans la mesure du possible, installer l'ouvre-porte à au moins 2,13 m (7 pi) au-dessus du sol.
5. Monter le dispositif de déclenchement d'urgence à portée de la main, mais à au moins 6 pi (1,83 m) du sol et éviter tout contact avec des véhicules afin d'éviter tout déclenchement accidentel.
6. Ne JAMAIS raccorder l'ouvre-porte de garage à une source de courant avant d'avoir reçu l'instruction de le faire.
7. Ne JAMAIS porter de montres, bagues ou vêtements amples durant l'installation ou l'entretien de l'ouvre-porte. Ils pourraient être happés par la porte de garage ou les mécanismes de l'ouvre-porte.
8. Installer la commande de porte du garage murale :
 - bien en vue de la porte de garage.
 - hors de portée des jeunes enfants à une hauteur d'au moins 1,53 m (5 pi) du sol, des paliers, des marches ou de toute autre surface adjacente sur laquelle on marche;
 - à l'écart de TOUTES les pièces mobiles de la porte.
9. Installer le rebre du dispositif de déclenchement d'urgence. Attacher le marquage sur ou à proximité du dispositif de déclenchement d'urgence. Installer l'affiche d'avertissement de piégeage en regard de la commande de porte à un endroit bien visible.
10. Apposer l'étiquette d'essai d'inversion de sécurité/d'ouverture d'urgence bien en vue sur le côté intérieur de la porte de garage.
11. Au terme de l'installation, faire l'essai du système d'inversion de sécurité. La porte DOIT remonter au contact d'un objet d'une hauteur de 3,8 cm (1 1/2 po) (ou un 2 x 4 posé à plat) sur le sol.

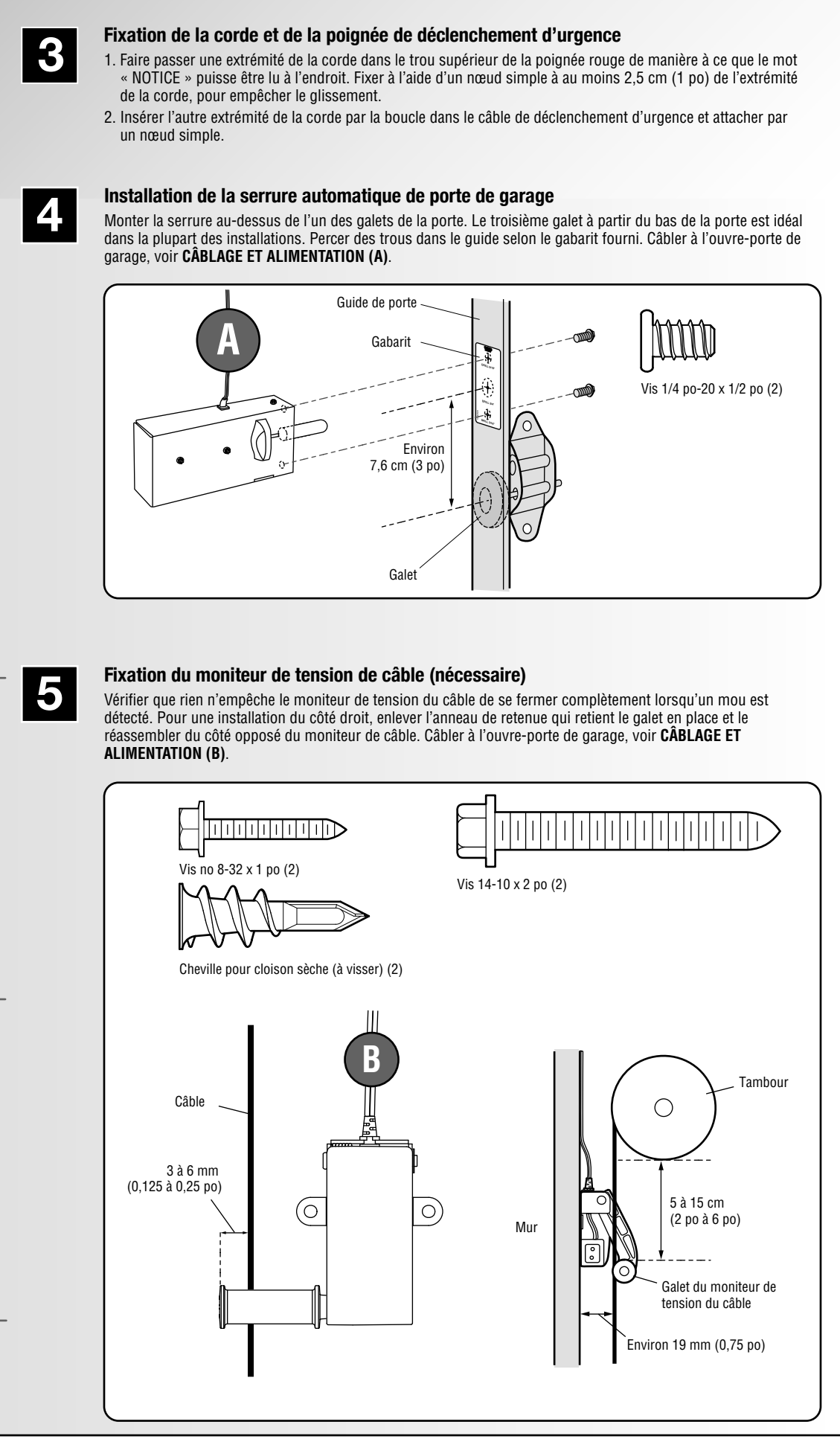
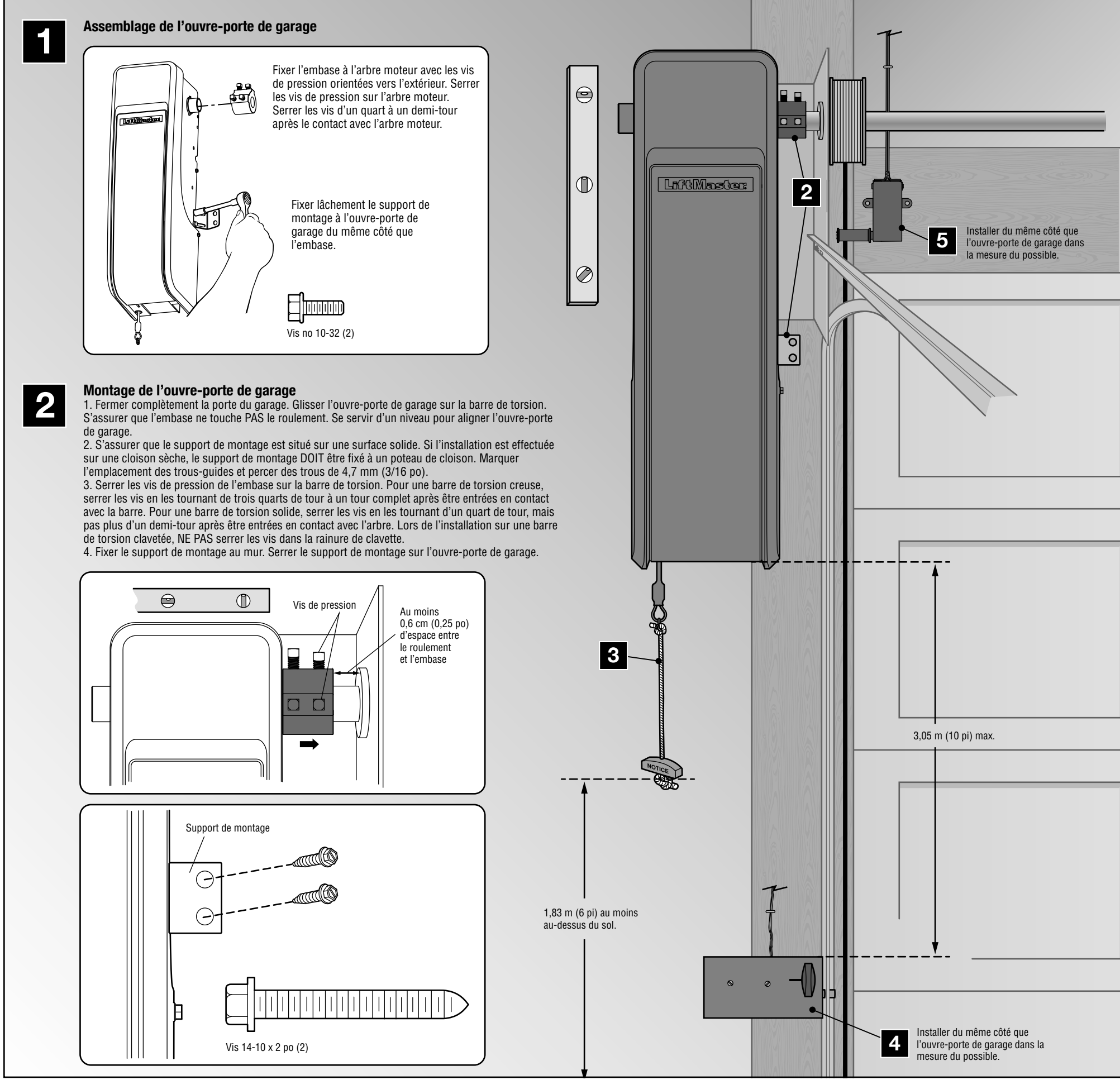
⚠️ AVERTISSEMENT : Ce produit peut vous exposer à des produits chimiques comme le plomb, reconnu par l'Etat de la Californie comme cause de cancers, d'anomalies congénitales et d'autres problèmes liés à la reproduction. Pour plus d'informations, visitez www.P5Vfirmings.ca.gov

ÉTAPE 1 PLANIFICATION

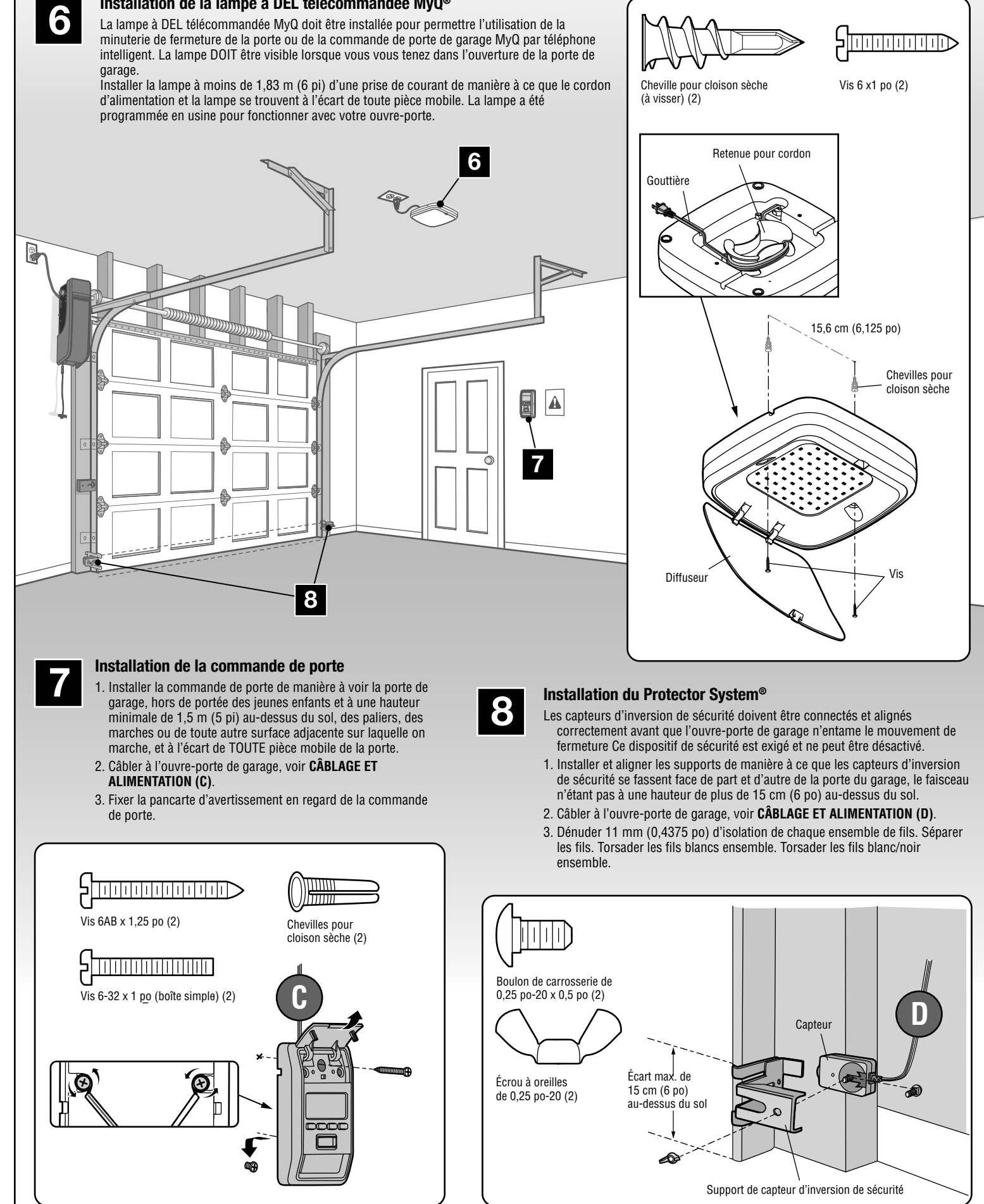
Inspecter la zone d'installation proposée pour vérifier qu'elle satisfait aux exigences ci-dessous. L'ouvre-porte de garage peut être installé d'un côté ou de l'autre de la porte. Les illustrations montrent une installation du côté gauche.



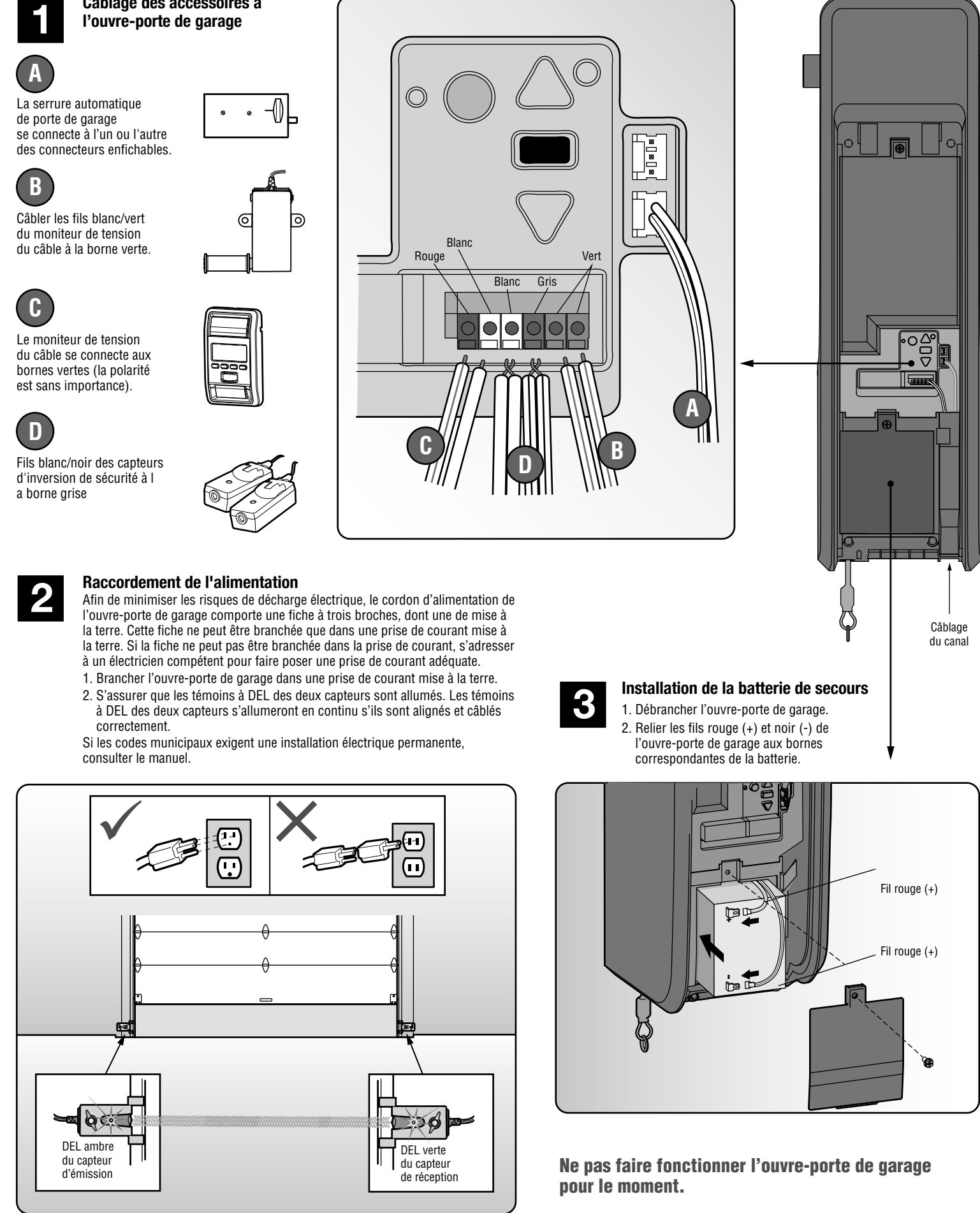
ÉTAPE 2 INSTALLATION



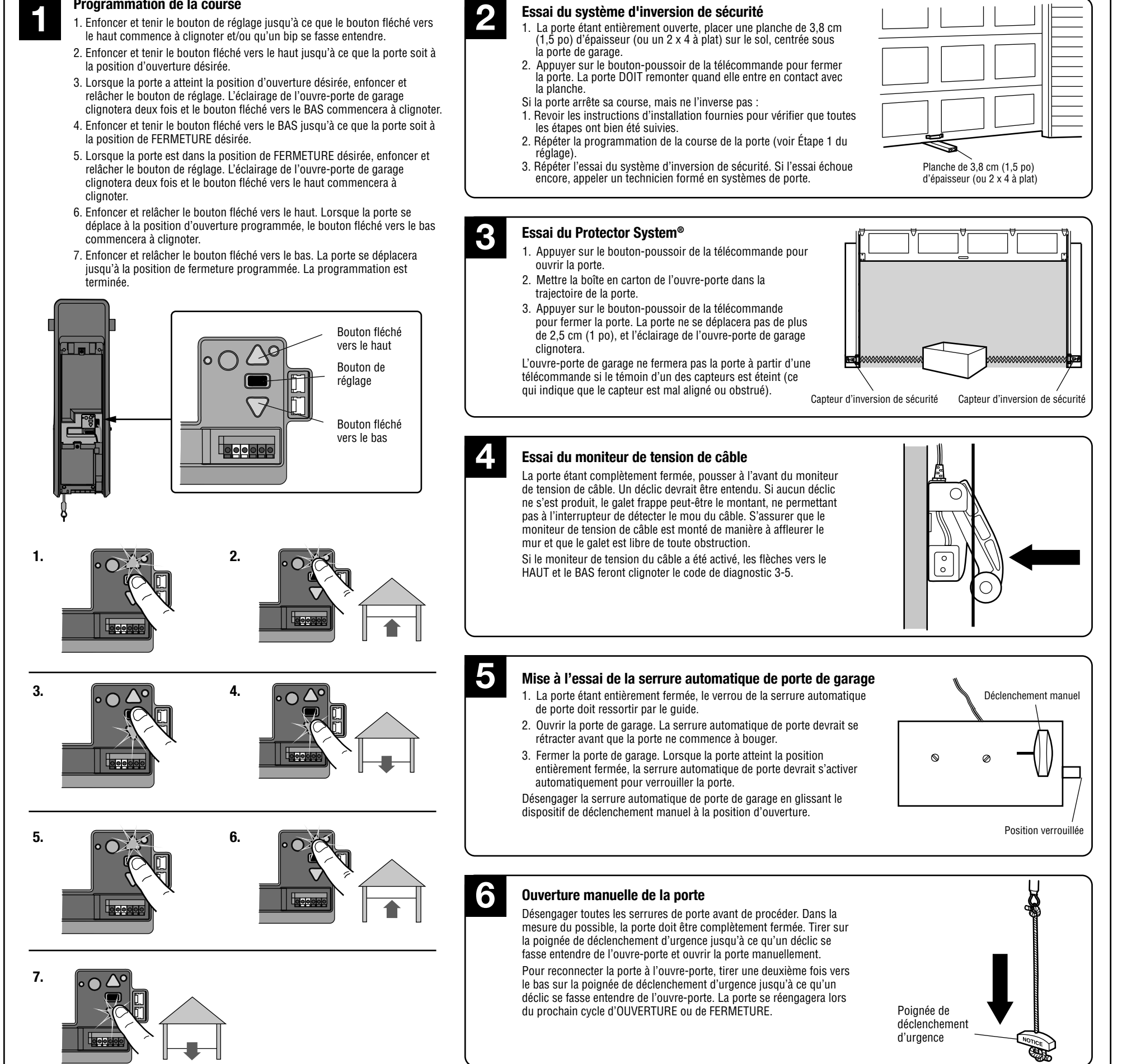
ÉTAPE 2 INSTALLATION (SUITE)



ÉTAPE 3 CÂBLAGE ET ALIMENTATION



ÉTAPE 4 RÉGLAGE



DÉPANNAGE

CODE DE DIAGNOSTIC		SYMPTÔME	SOLUTION
1	1	L'ouvre-porte de garage ne ferme pas la porte et l'éclairage clignote.	Les capteurs d'inversion de sécurité ne sont pas installés, connectés, ou les fils sont coupés. Vérifier les fils du capteur pour y déceler tout fil déconnecté ou coupé.
1	2	L'ouvre-porte de garage ne ferme pas la porte et l'éclairage clignote.	Les capteurs d'inversion de sécurité sont court-circuités ou un fil est inversé. Inspecter le câblage des capteurs d'inversion de sécurité et tous les points d'agrafe et de connexion; remplacer ou corriger les fils au besoin.
1	3	La commande de porte ne fonctionne pas.	Les fils de la commande de porte sont court-circuités ou la commande de porte est détectée. Inspecter les fils de la commande de porte à tous les points d'agrafe et de connexion; remplacer ou corriger les fils au besoin.
1	4	L'ouvre-porte de garage ne ferme pas la porte et l'éclairage clignote.	Les capteurs d'inversion de sécurité sont désalignés ou momentanément obstrués. Réaligner les deux capteurs pour s'assurer que les deux DEL s'allument de manière continue et ne clignotent pas. S'assurer que rien ne pend ou n'est monté sur la porte, ce qui pourrait perturber le champ des capteurs pendant la fermeture.
1	5	La porte est en mouvement sur une distance de 15 à 20 cm (6 à 8 po), puis s'arrête ou inverse sa course.	Ouvrir et fermer manuellement la porte. Vérifier si un objet est collé ou obstrue la porte, comme un ressort ou une serrure brisée; corriger au besoin. Remplacer la carte logique au besoin.
1	6	La porte glisse après qu'elle se soit complètement arrêtée.	Ouvrir et fermer manuellement la porte. Vérifier si un objet est collé ou obstrue la porte, comme un ressort ou une serrure brisée; corriger au besoin. Remplacer la carte logique au besoin.
2	1-5	Aucun mouvement ni son.	Remplacer la carte logique.
3	3	La DEL d'état de charge de la batterie clignote constamment en vert.	Erreur de communication avec le module de commande de la batterie; remplacer la carte logique.
3	5	L'ouvre-porte de garage ne ferme pas la porte ou celle-ci inverse sa course.	Vérifier ce qui peut éventuellement bloquer la porte et éliminer les obstacles. Vérifier que le moniteur de tension du câble est correctement connecté à l'ouvre-porte. Remplacer le moniteur de tension du câble. Si deux moniteurs de tension de câble ont été antérieurement installés et que l'un des deux a été endommagé, débrancher et rebrancher l'ouvre-porte.
4	1-4	Le mouvement de la porte s'interrompt ou/et repart en direction inverse.	Ouvrir et fermer manuellement la porte. Vérifier si un objet est collé ou obstrue la porte, comme un ressort ou une serrure brisée; corriger au besoin. Appeler un technicien formé en systèmes de porte. Si la porte ne force pas ou ne colle pas, essayer de reprogrammer la course.
4	5	La porte est en mouvement sur une distance de 15 à 20 cm (6 à 8 po), puis s'arrête ou inverse sa course.	Erreur de communication avec le module de commande de la batterie. Vérifier les connexions du module de course; remplacer le module au besoin.
4	6	L'ouvre-porte de garage ne ferme pas la porte et l'éclairage clignote.	Les capteurs d'inversion de sécurité sont désalignés ou momentanément obstrués. Réaligner les deux capteurs pour s'assurer que les deux DEL s'allument de manière continue et ne clignotent pas. S'assurer que rien ne pend ou n'est monté sur la porte, ce qui pourrait perturber le champ des capteurs pendant la fermeture.
5	5	La porte ne se ferme pas lors de l'utilisation de la commande MyQ par téléphone intelligent.	La lampe à DEL télécommandée MyQ doit être installée pour permettre l'utilisation de la commande MyQ de la fermeture de la porte ou de la commande de porte MyQ. Brancher la lampe à DEL télécommandée MyQ et vérifier qu'elle est programmée à l'ouvre-porte de garage.